



7 Candler Street, Scarborough, YO12 7DF

Guide Price £155,000

- WELL PRESENTED TERRACED PROPERTY
- GAS CENTRAL HEATING
- SEPARATE DINING ROOM
- THREE BEDROOMS
- ENCLOSED REAR YARD
- IDEAL CENTRAL LOCATION CLOSE TO AMENITIES
- UPVC DOUBLE GLAZING
- FRONT FACING BAY WINDOW
- FEATURE FIREPLACE

7 Candler Street, Scarborough YO12 7DF

Andrew Cowen Estate Agents welcomes to the market this **WELL PRESENTED THREE BEDROOM, TERRACED PROPERTY** located in a central position close to a range of shops and local amenities, **BOASTING a FRONT FACING, BAY WINDOW LOUNGE, SEPARATE DINING AREA and ENCLOSED YARD** to the rear. This property has been lovingly restored by the current owners to reflect the heritage of the property, and modernised with the installation of a central heating system, re-roof and fully boarded loft, new double glazing throughout and new bathroom. This property would appeal to **A NUMBER OF BUYERS, including FIRST TIME BUYERS, INVESTORS ALIKE** or simply looking to downsize.



Council Tax Band: A



This accommodation briefly comprises, entrance hallway into the front facing, bay window lounge with feature fireplace, a separate dining room with storage cupboards and kitchen. The property offers two, good sized double bedrooms, one single bedroom currently being used as an office and a modern three-piece family bathroom with shower over the bath. Externally, the property features an enclosed rear yard.

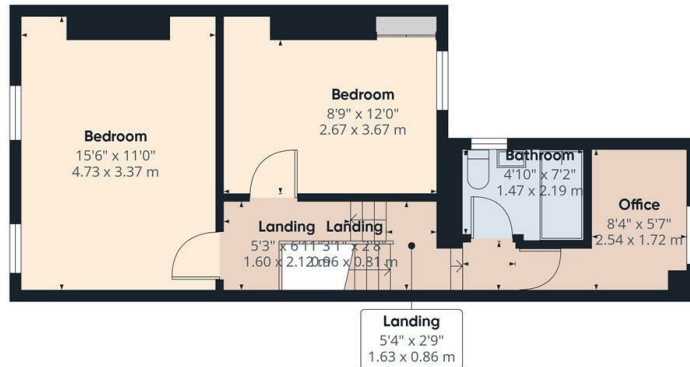
The property occupies an enviable position within a popular residential area, well positioned centrally to a wealth of amenities including local shops, supermarket, popular Gladstone Road junior school, Manor Road play park plus much more a little further away including Peasholm Park and Scarborough town centre itself.

This property would appeal to a host of buyers, including those looking to join the property ladder or investors alike. Please call our friendly Sales Team on 01723 377707 to arrange your viewing today!





Floor 0



Floor 1

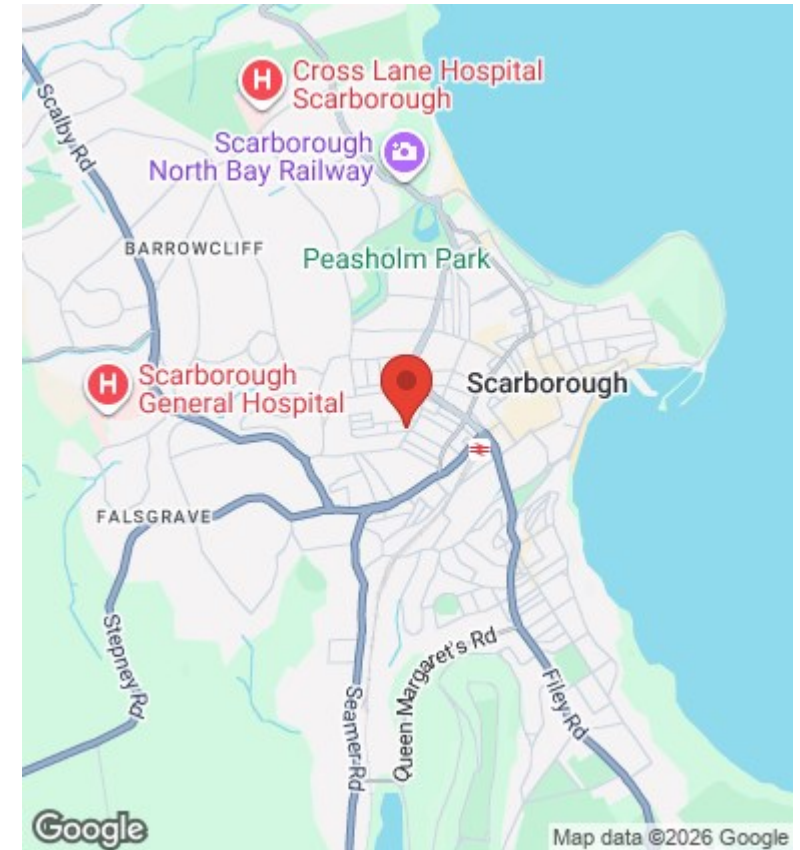


Approximate total area⁽¹⁾
876 ft²
81.4 m²

(1) Excluding balconies and terraces

Calculations reference the RICS IPMS 3C standard. Measurements are approximate and not to scale. This floor plan is intended for illustration only.

GIRAFFE360



Looking to Sell?

Book a no obligation valuation today!

01723 377707

Energy Efficiency Rating		Current	Potential
Very energy efficient - lower running costs			
(92 plus)	A		
(81-91)	B		
(69-80)	C		76
(55-68)	D	62	
(39-54)	E		
(21-38)	F		
(1-20)	G		
Not energy efficient - higher running costs			
England & Wales		EU Directive 2002/91/EC	